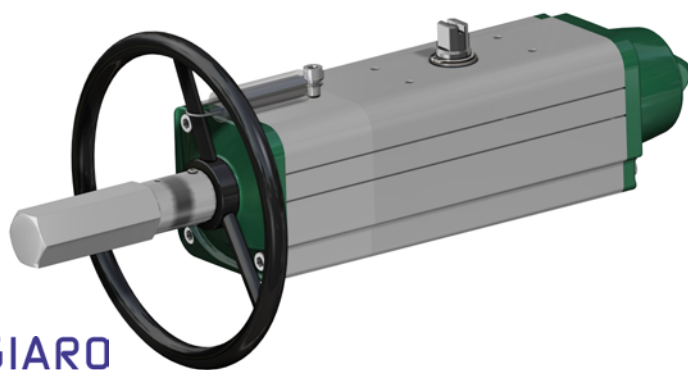


Manual Override Actuator

MADE IN ITALY 



GIUGIARO
DESIGN



ACTUATECH

ACTUATOR TECHNOLOGY

GDV – GSV series Actuotech Manual Override Actuator

Actuator Performances

- Special scotch yoke design that gives an increased torque and the seat break out point.
- Bush steel alloy and Scotch yoke steel alloy: use of steel parts instead of aluminium parts, ensures high wear resistance to the internal mechanism and consequent longer working life.
- Compact design with reduced overall dimension allows an easy handling & minimal air (energy) consumption.
- Special compound seals and guide on the sliding pistons, ensures self lubrication for life.
- The special double on one sealing rings grants a longer life maintenance free without O-ring sticking and replacement.
- Internal bores are fine lapped and have anodized surface treatment for lower friction and perfect piston sealing and increases the life of the sliding parts.
- Maintenance free for the full actuator working life.
- Standard stainless steel drive shaft protects against the environmental corrosion.
- Shaft anti-blowing system. The driving shaft/lever construction avoids any possible expulsion of the shaft.
- ATEX 2014/34/EU for suitability of the equipment intended for the use in Potentially Explosive Atmosphere.

Actuator Nominal Torque: from 30 Nm to 3840 Nm.

Mounting flange according with DIN/ISO 5211, DIN 3337: F05 - F07 - F10 - F12 - F14 - F16.

NAMUR standard pressure connection.

Rotation angle: 92° (-1°+91°).

Nominal pressure: 5,6 bar; maximum operating pressure 8,4 bar.

The torque is directly proportional to the operating pressure.

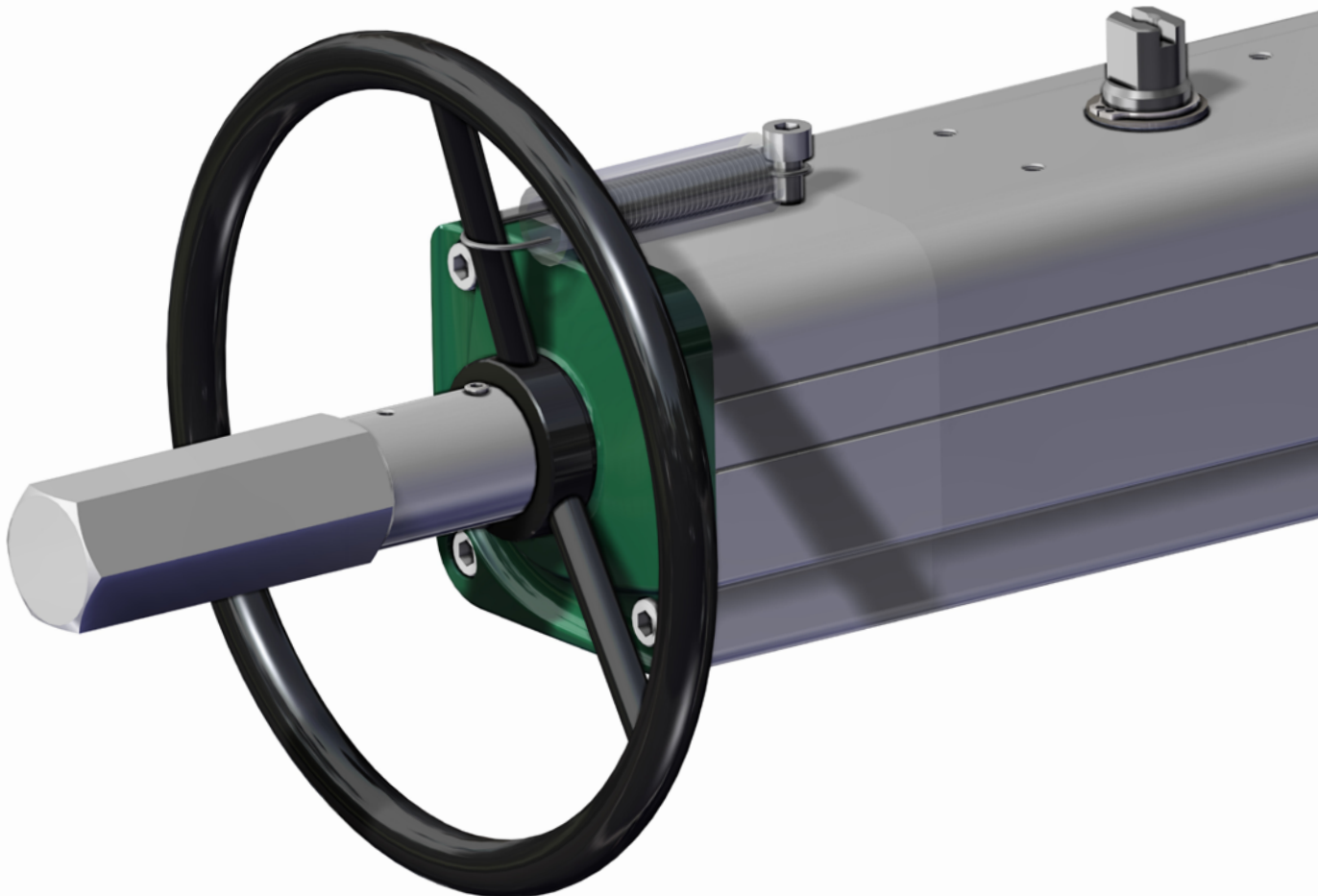
For the simple acting (spring return) actuators the reverse torque is performed only by the spring action, and is independent from the operating pressure.

Temperature: from -20°C to +80°C (Special version HT -20°C to +150°C or LT -50°C to +60°C).

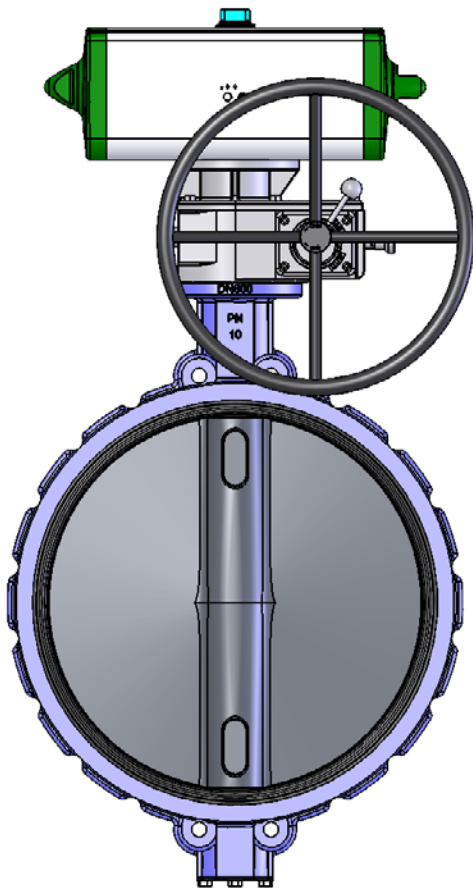
Operating media: compress filtered air not necessarily lubricated (for temperature under 0°C use dry air).

In case of lubricated air, use non-detergent oil compatible with NBR rubber.

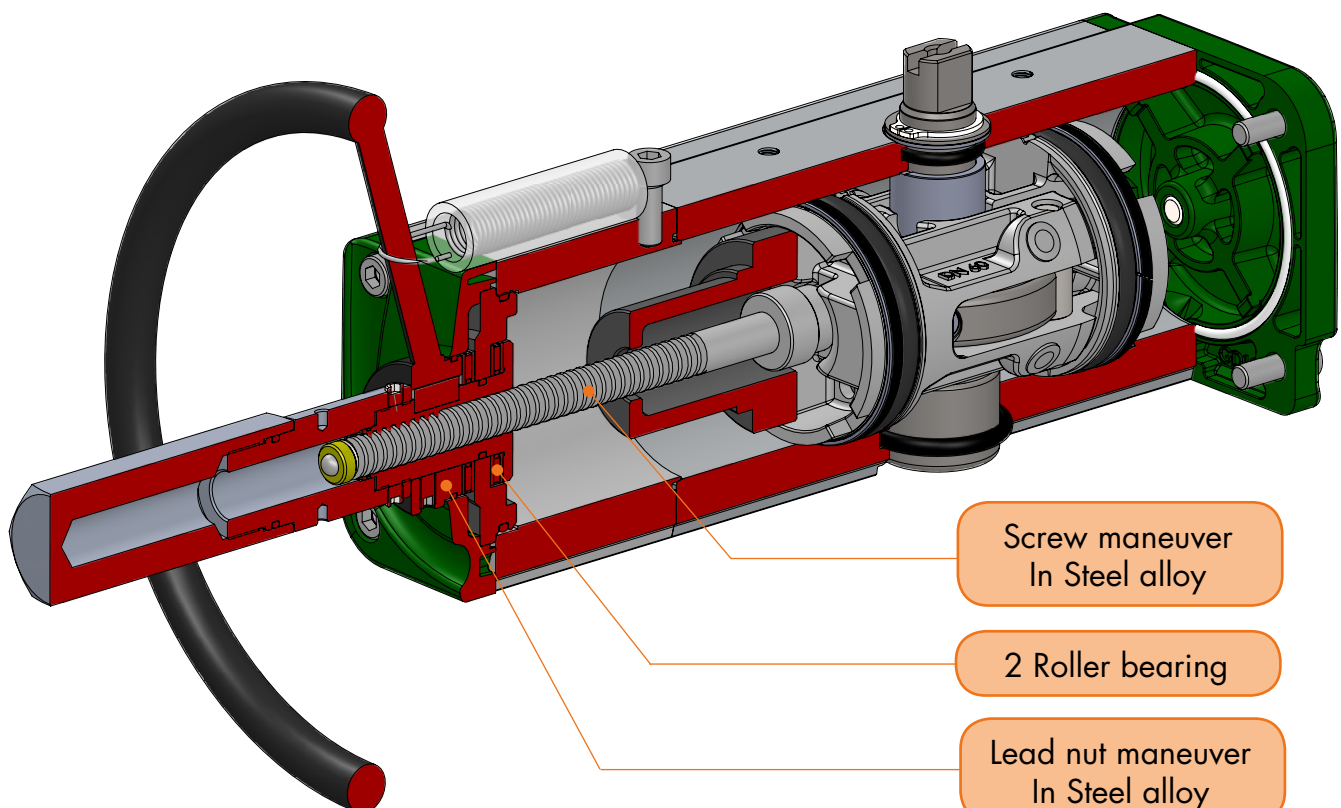
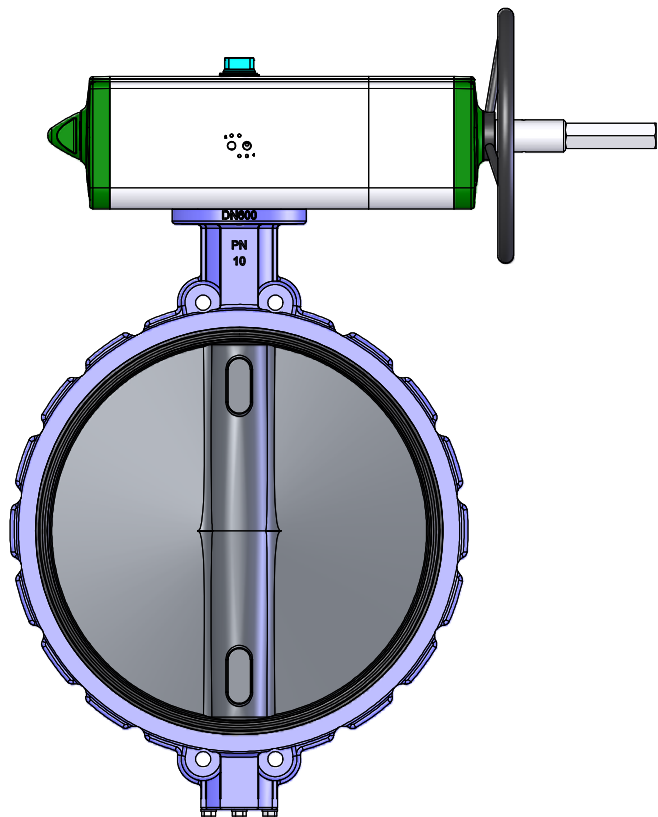
All the models are available in double acting "GDV" and simple acting "GSV" version.



Actuatech typical actuator
with decluchable gear box



New Actuatech manual override actuator
More light -20% than decluchable gear box
Compact size
Easy to use, easy to mount
Actuator may be locked in open
or in closed position



Screw maneuver
In Steel alloy

2 Roller bearing

Lead nut maneuver
In Steel alloy

Double Acting Actuators GDV data and dimensions

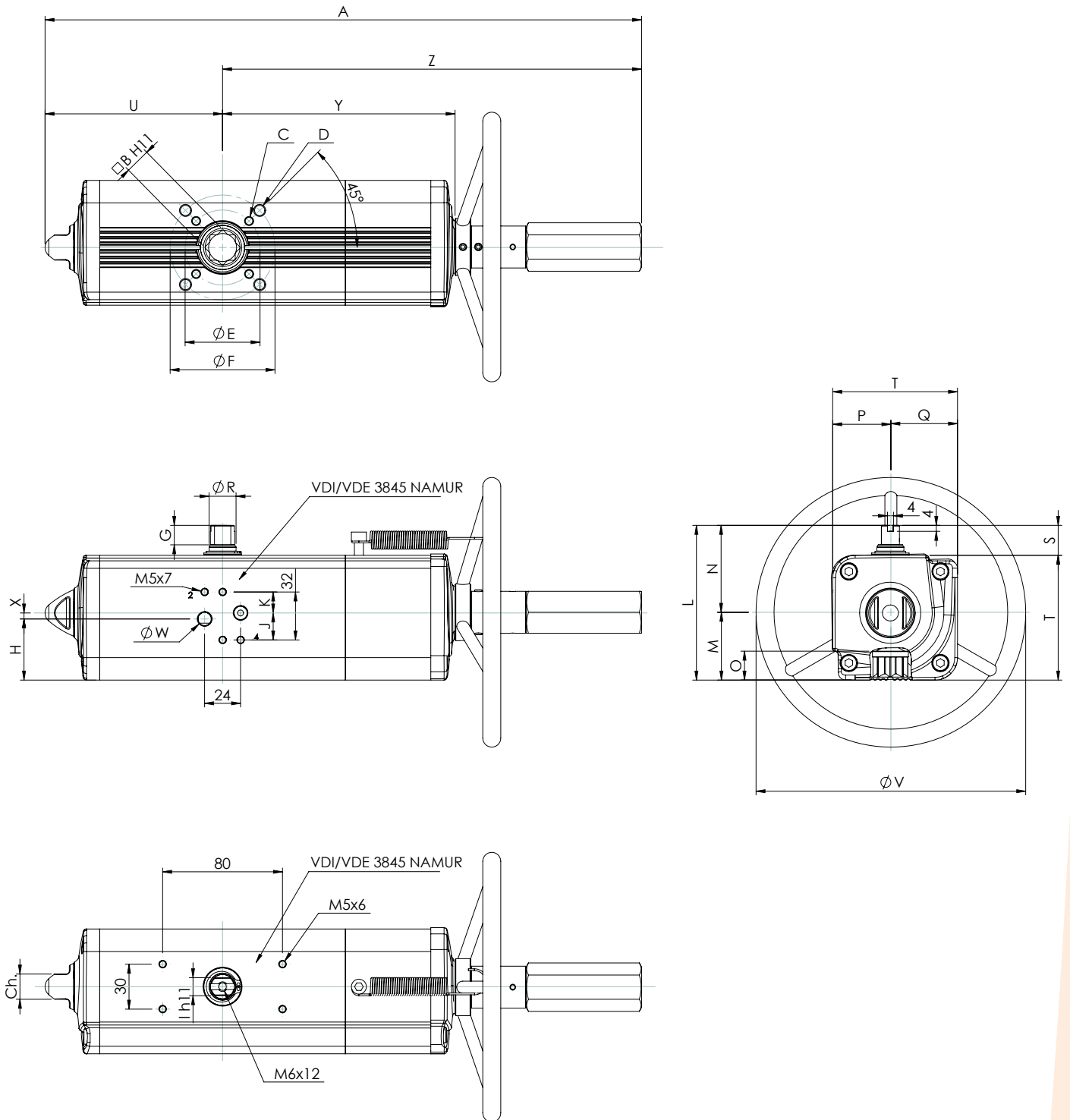
TYPE	GDV60	GDV106	GDV120	GDV180	GDV240	GDV360	GDV480	GDV720	GDV960	GDV1440	GDV1920	GDV3840
Nominal Torque (Nm at 5,6 Bar)	60	106	120	180	240	360	480	720	960	1440	1920	3840
Rim pull forces to obtain the nominal torque (N)	19,3	27,8	33,8	44,1	54,5	67,5	83,3	108,8	128,6	133,5	162,5	243,5
Theoretical n° of turns to close / open starting from neutral position	11	13	14	16	18	15	16	19	20	25	26	30
Weight (Kg)	2,8	4	4,5	6	8	10,2	13,2	17,8	23,8	33,6	43	75
Air consumption dm3/cycle (l/cycle)	0,3	0,7	0,59	1,2	1,65	2,3	3,2	4,6	6,05	9,7	12,9	24,3

(for torque table and other information see the actuator standard catalogue)

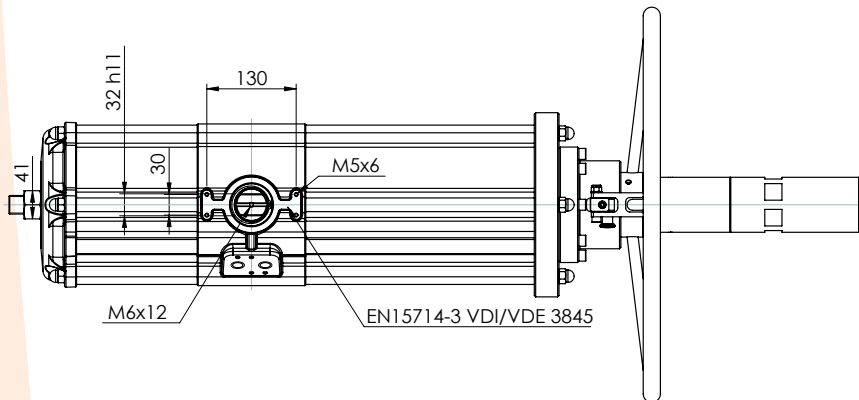
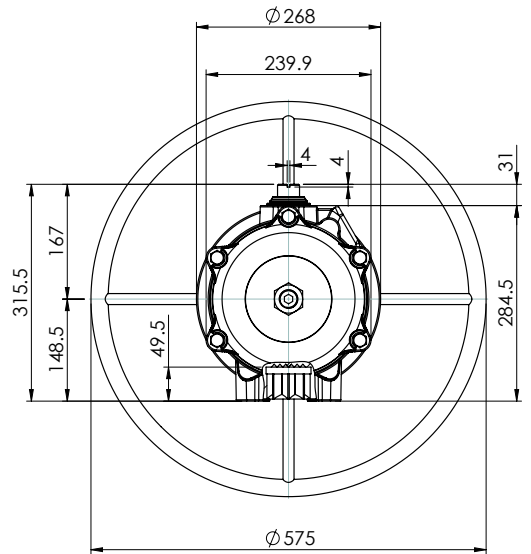
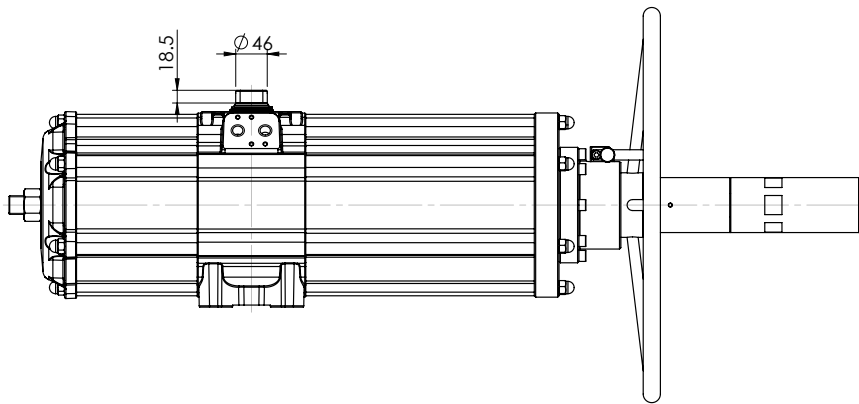
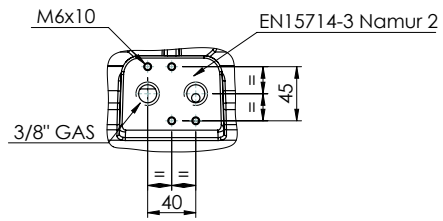
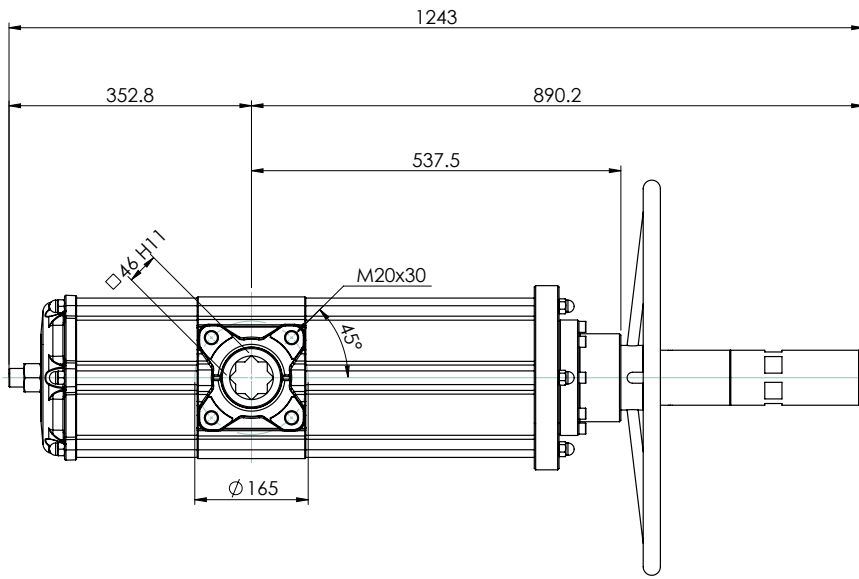
TYPE	GDV60	GDV106	GDV120	GDV180	GDV240	GDV360	GDV480	GDV720	GDV960	GDV1440	GDV1920			
ISO	F05/F07	F05/F07	F05/F07	F07/F10	F07/F10	F07/F10	F10/F12	F10/F12	F10/F12	F14	F12	F14	F12/F16	F14
A	362,3	397,8	410,5	483	510,5	567,6	634,4	720,1	758	758	919,9	919,9	954,1	954,1
B	14	17	17	22	22	22	27	27	36	36	36	36	46	46
C x depth	M6x9	M6x9	M6x9	M8x12	M8x12	M8x12	M10x15	M10x15	M10x15	M16x24	M12x18	M16x24	M12x18	M16x24
D x depth	M8x12	M8x12	M8x12	M10x15	M10x15	M10x15	M12x18	M12x18	M12x18	-	-	-	M20x30	-
E	50	50	50	70	70	70	102	102	102	140	125	140	125	140
F	70	70	70	102	102	102	125	125	125	-	-	-	165	-
G	13	13	13	16	17	19	19	19,5	19,5	19,5	19,5	19,5	18,5	18,5
H	33,7	40,8	42,8	52,5	56,1	58	57,4	61,5	78	78	86,5	86,5	99,2	99,2
J	18	18	18	18	18	18	16	16	16	16	16	16	16	16
K	14	14	14	14	14	14	16	16	16	16	16	16	16	16
I	10	12	12	15	15	19	19	22	24	24	27	27	32	32
L	90,4	103,3	107	137,5	141,1	148	164,9	178	198	198	216	216	237,7	237,7
M	37,7	44,8	46,8	56,5	60,1	62	72,9	78,5	93,5	93,5	101,5	101,5	114,7	114,7
N	52,7	58,5	60,2	81	81	86	92	99,5	104,5	104,5	114,5	114,5	123	123
O	16,5	19,3	19,3	24,8	24,8	24,3	29,5	29,5	38,5	38,5	38,5	38,5	48,5	48,5
P	32,7	38,5	40,2	51	51	56	62	69,5	74,5	74,5	84,5	84,5	93	93
Q	37,7	44,8	46,8	56,5	60,1	62	72,9	78,5	93,5	93,5	101,5	101,5	114,7	114,7
R	14,5	16,2	18	20,2	22,5	25,5	29	31,8	36,5	36,5	41	41	46	46
S	20	20	20	30	30	30	30	30	30	30	30	30	30	30
T	70,4	83,3	87	107,5	111,1	118	134,9	148	168	168	186	186	207,7	207,7
U	99	118,5	122,1	144,9	156,8	169,6	193,8	216,6	239,7	239,7	283,5	283,5	300,4	300,4
V	180	180	180	220	220	300	300	350	350	350	400	400	400	400
W (Gas)	1/8"	1/8"	1/8"	1/8"	1/8"	1/8"	1/4"	1/4"	1/4"	1/4"	1/4"	1/4"	1/4"	1/4"
X	4	4	4	4	4	4	-	-	-	-	-	-	-	-
Y	137,6	154,8	163,9	183,5	199,1	220,8	236,4	282,3	297,1	297,1	365,6	365,6	382,9	382,9
Z	263,3	279,3	288,4	338,1	353,7	398	440,6	503,5	518,3	518,3	636,4	636,4	653,7	653,7
Ch	13	17	17	22	22	22	27	27	27	27	36	36	36	36

*All dimensions are in mm.

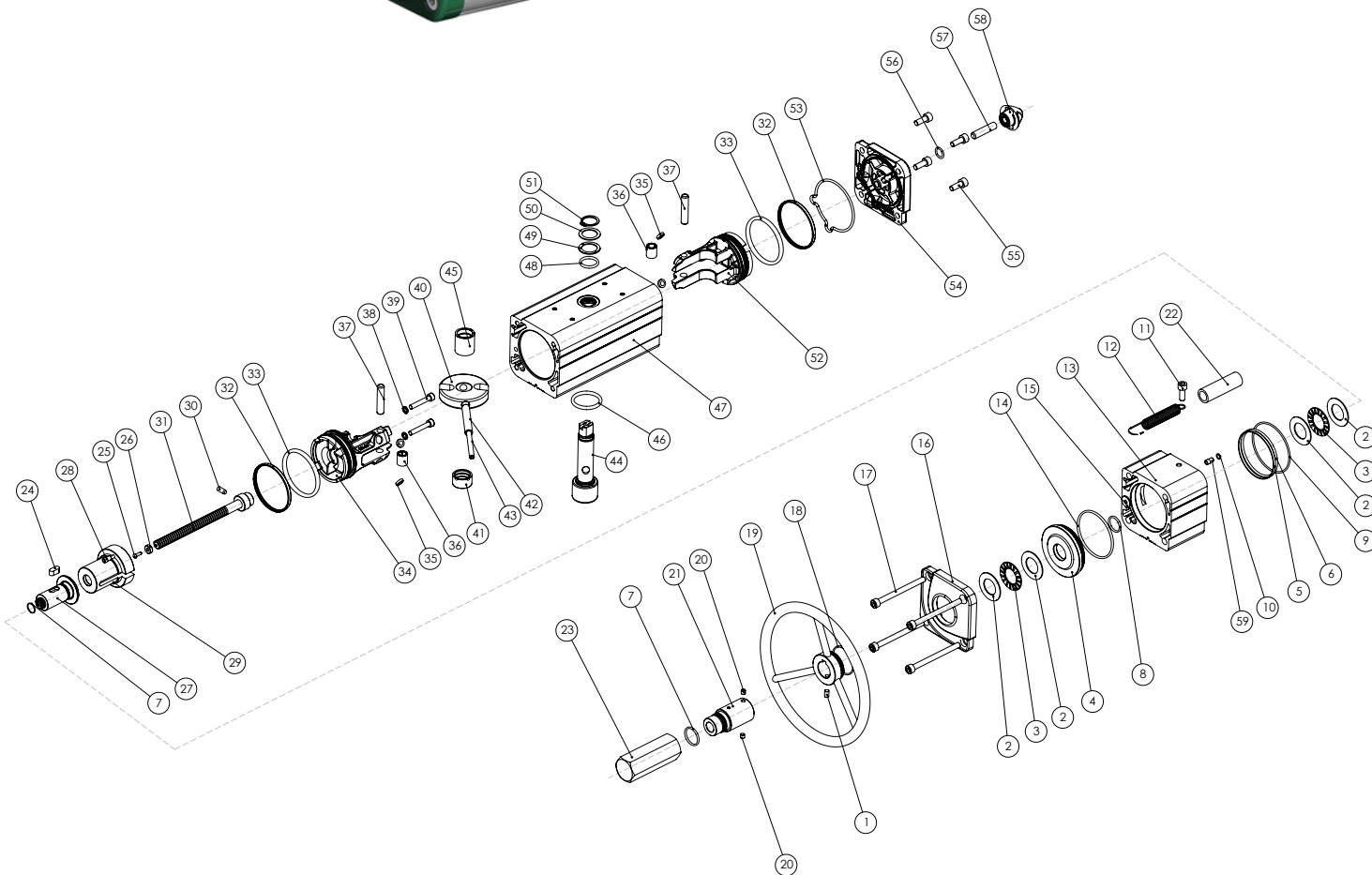
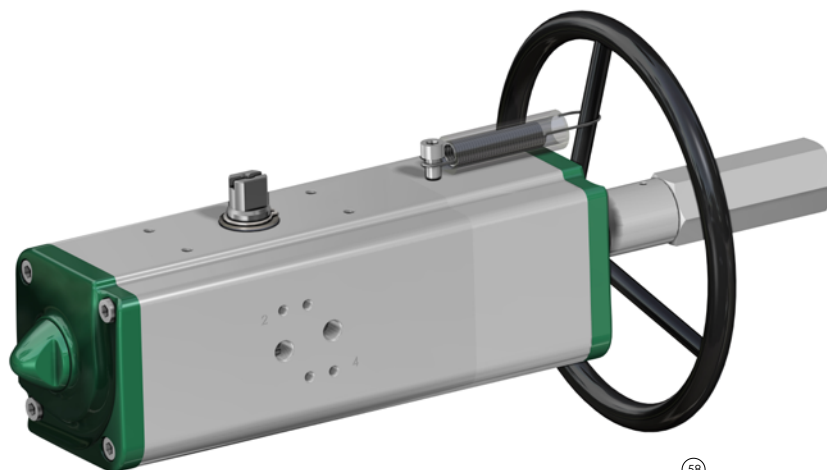
Double Acting Actuators from GDV60 to GDV1920



Double Acting Actuators GDV3840



GDV60 ÷ GDV1920 Part list

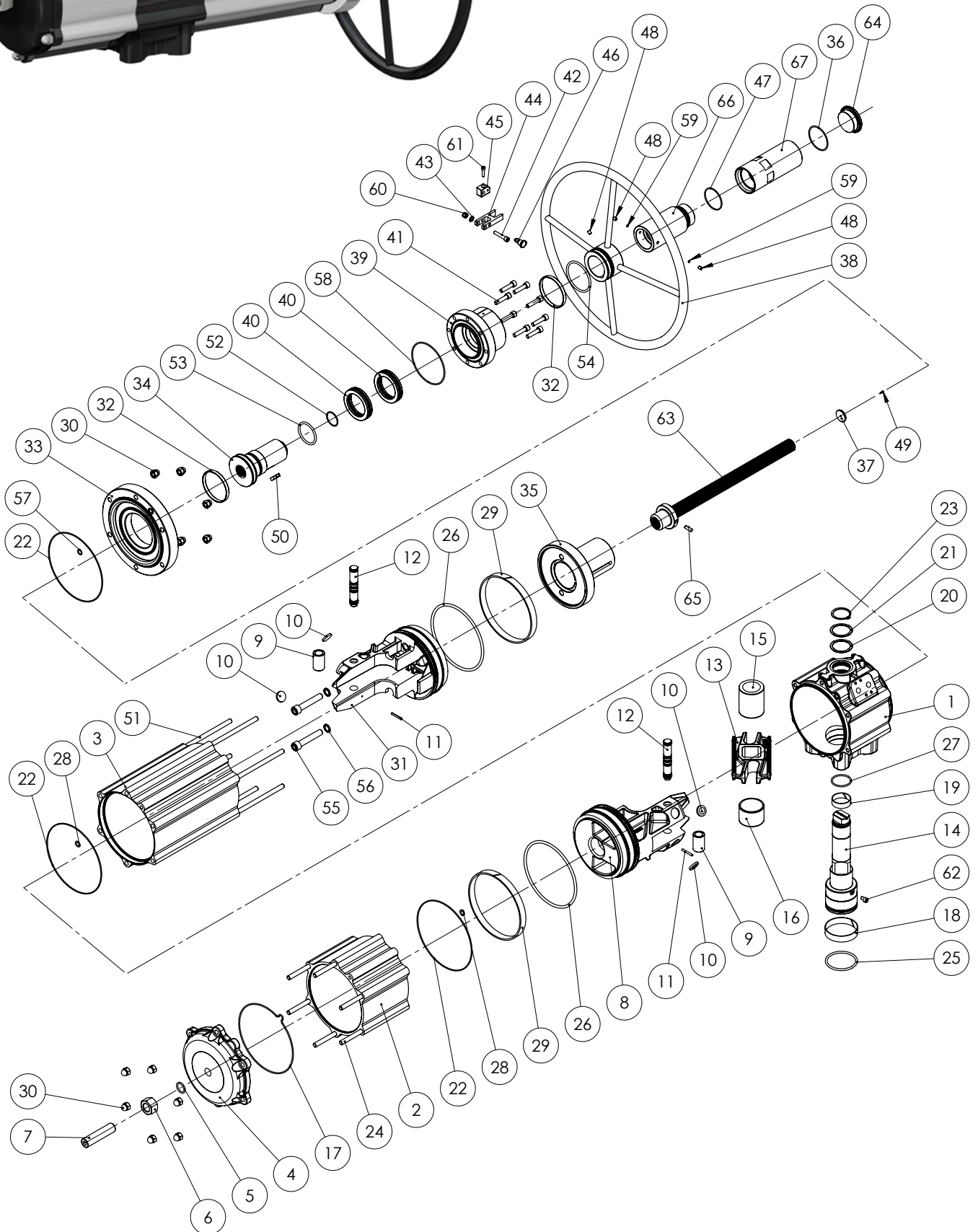
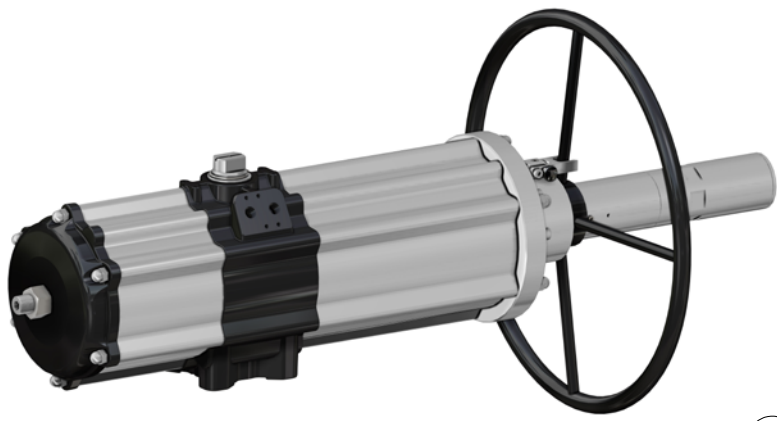


Pos	Denomination	Quantity	Materials
1	Screw	1	Stainless steel
2*	Washer for roller bearing	4	Steel alloy
3*	Roller bearing	2	Steel alloy
4	Flange	1	Aluminium alloy
5	Centering ring (only for GDV 720)	1	Aluminium alloy
6*	O ring (only for GDV 720)	1	Nitrilic rubber
7*	O ring	2	Nitrilic rubber
8*	O ring	1	Nitrilic rubber
9*	O ring	1	Nitrilic rubber
10*	O ring	1	Nitrilic rubber
11	Screw	1	Stainless steel
12	Spring	1	Stainless steel
13	Cylinder spacer	1	Aluminium alloy
14*	O ring	1	Nitrilic rubber
15*	Seal cap	1	Brass + Nitrilic rubber
16	Cap (Modified)	1	Aluminium alloy
17	Screw	4	Stainless steel
18*	O ring (or seal)	1	Nitrilic rubber
19	Handwheel for maneuver	1	Steel alloy
20	Set screw	2	Stainless steel
21	Protecting tube	1	Aluminium alloy
22	Transparent tube	1	Polycarbonate
23	Protecting cap	1	Aluminium alloy
24	Key	1	Steel alloy
25*	Rivet	1	Steel alloy
26*	Indicator	1	Polypropylene
27	Lead nut maneuver	1	Steel alloy
28	Threaded bush (only for GDV 480)	2	Stainless steel
29	Special spring cap	1	Aluminium alloy
30	Pin	1	Steel alloy

Pos	Denomination	Quantity	Materials
31	Screw maneuver	1	Steel alloy
32*	Dynamic seal (piston)	2	Polyurethane
33*	O ring	2	Nitrilic rubber
34	Piston (modified)	1	Aluminium alloy
35*	Piston's support	4	P.T.F.E. Carbo-Graphite filled
36	Bush	2	Steel alloy
37	Rotative sleeve	2	Steel alloy
38*	Bounded	2	Stainless steel + Nitrilic rubber
39	Screw	2	Stainless steel
40	Scotch yoke	1	Steel alloy
41	Shaft support	1	Acetalic resin
42	External elastic pin of the yoke	1	Steel alloy
43	Internal elastic pin of the yoke	1	Steel alloy
44	Shaft	1	Stainless steel
45	Support bush	1	Acetalic resin
46	O ring (lower sealing shaft)	1	Fkm
47	Cylinder	1	Aluminium alloy
48	O ring (upper sealing shaft)	1	Fkm
49	External support ring	1	Acetalic resin
50	Washer	1	Stainless steel
51	Seeger	1	Stainless steel
52	Piston (standard)	1	Aluminium alloy
53*	Cap O ring	1	Nitrilic rubber
54	Cap (standard)	1	Aluminium alloy
55	Screw	4	Stainless steel
56*	O ring	1	Nitrilic rubber
57	Grub screw	1	Stainless steel
58	Nut	1	Aluminium alloy
59	Insert for O ring (for GDV 106-240-360-720)	1	Stainless steel

* Components of spare part kit

GDV3840 Part list



Pos	Denomination	Quantity	Materials
1	Cylinder	1	Aluminium alloy
2	Cylinder	1	Aluminium alloy
3	Cylinder	1	Aluminium alloy
4	Cap GDV	1	Aluminium alloy
5*	O ring	1	Nitrilic Rubber
6	Nut	1	Stainless steel
7	Grub screw	1	Stainless steel
8	Piston	1	Aluminium alloy
9	Bush	2	Steel alloy
10*	Piston's support	4	Acetalic resin
11	Spring pin	2	Steel alloy
12	Rotative sleeve	2	Steel alloy
13	Scotch yoke	1	Steel alloy
14	Shaft	1	Stainless steel
15	Support bush	1	Acetalic resin
16	Shaft support	1	Acetalic resin
17*	Cap O-ring	1	Nitrilic Rubber
18*	Bearing (shaft button)	1	Acetalic resin
19*	Bearing (shaft top)	1	Acetalic resin
20*	External support ring	1	Acetalic resin
21	Washer	1	Stainless steel
22*	Cylinder O-ring	3	Nitrilic Rubber
23	Seeger	1	Stainless steel
24	Cap screw	6	Stainless steel
25*	O-ring (low sealing shaft)	1	FKM
26*	Piston o-ring	2	Nitrilic Rubber
27*	O-ring (upper sealing shaft)	1	FKM
28*	O-ring	2	Nitrilic Rubber
29*	Dynamic seal (piston)	2	P.T.F.E. Carbo-Graphite filled
30	Cap nut	12	Stainless steel
31	Piston (modified)	1	Aluminium alloy
32*	Bearing (handwheel)	2	Polyurethane
33	Special cap	1	Aluminium alloy
34	Lead nut maneuver	1	Steel alloy
35	Special springs cap	1	Steel alloy
36*	O ring	1	Nitrilic Rubber
37*	Indicator	1	Polypropylene
38	Handwheel for maneuver	1	Steel alloy
39	Flange	1	Aluminium alloy
40*	Thrust bearing	2	Steel alloy
41	Screw	8	Stainless steel
42	Screw	1	Stainless steel
43	Washer	1	Stainless steel
44	Closing fork	1	Aluminium alloy
45	Fork support	1	Aluminium alloy
46	Lock wheel	1	Stainless steel
47*	O ring	1	Nitrilic Rubber
48	Screw	3	Stainless steel
49*	Rivet	1	Stainless steel
50	Key	1	Stainless steel
51	Cap screw	6	Steel alloy
52*	O-ring	1	Nitrilic Rubber
53*	O ring	1	Nitrilic Rubber
54*	O ring	1	Nitrilic Rubber
55	Screw	2	Stainless steel
56*	Bounded	2	Stainless steel + Nitrilic Rubber
57*	O ring	1	Nitrilic Rubber
58*	O ring	1	Nitrilic Rubber
59*	Plug	2	PTFE
60	Nut	1	Stainless steel
61	Screw	1	Stainless steel
62	Safety screw	1	Stainless steel
63	Screw maneuver	1	Stainless steel
64	Protecting cap	1	Aluminium alloy
65	Pin	1	Stainless steel
66	Protecting tube	1	Aluminium alloy
67	Protecting removable tube	1	Aluminium alloy

* Components of spare part kit

Spring Return Actuators GSV data and dimensions

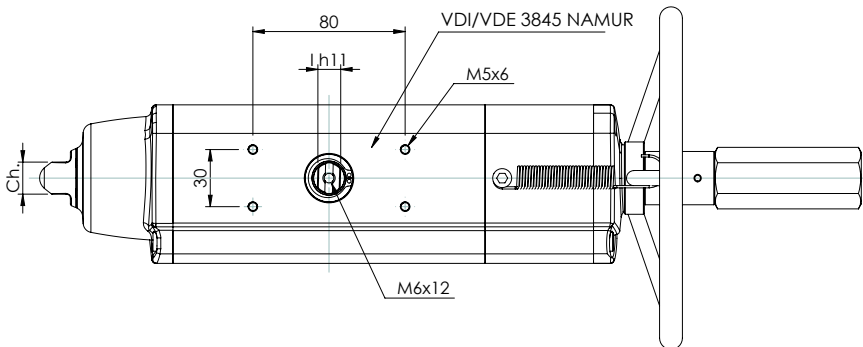
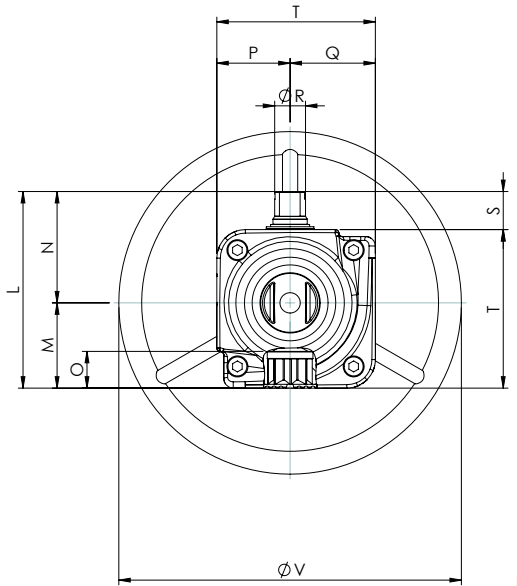
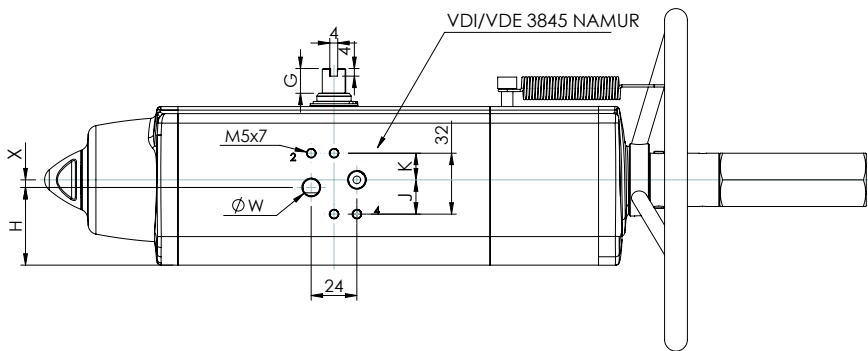
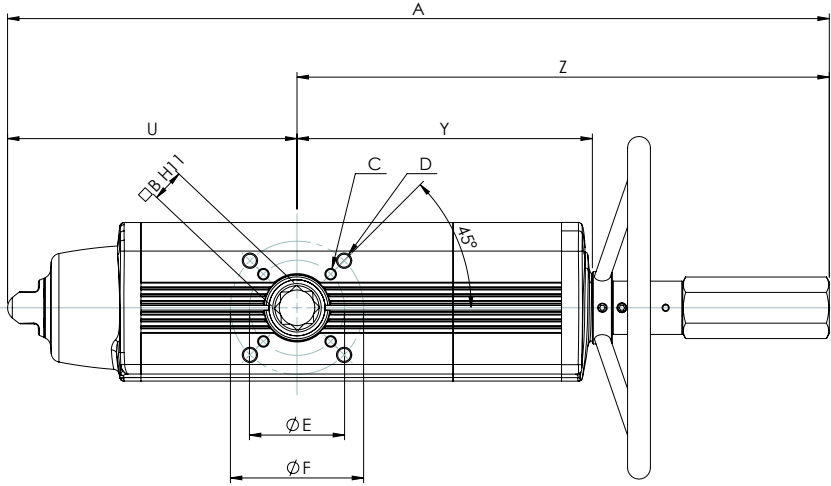
TYPE	GSV30	GSV53	GSV60	GSV90	GSV120	GSV180	GSV240	GSV360	GSV480	GSV720	GSV960	GSV1920
Nominal Torque (Nm at 5,6 Bar)	30	53	60	90	120	180	240	360	480	720	960	1920
Rim pull forces to obtain the nominal torque (N)	19,3	27,8	33,8	44,1	54,5	67,5	83,3	108,8	128,6	133,5	162,5	243,5
Theoretical n° of turns to close / open starting from neutral position	11	13	14	16	18	15	16	19	20	25	26	30
Weight (Kg)	3,2	4,5	5,3	6,8	9	11,7	15,2	19,5	28,1	38,8	50,6	91
Air consumption dm3/cycle (l/cycle)	0,17	0,3	0,33	0,55	0,8	1	1,5	2	2,8	4,2	5,9	12,5

(for torque table and other information see the actuator standard catalogue)

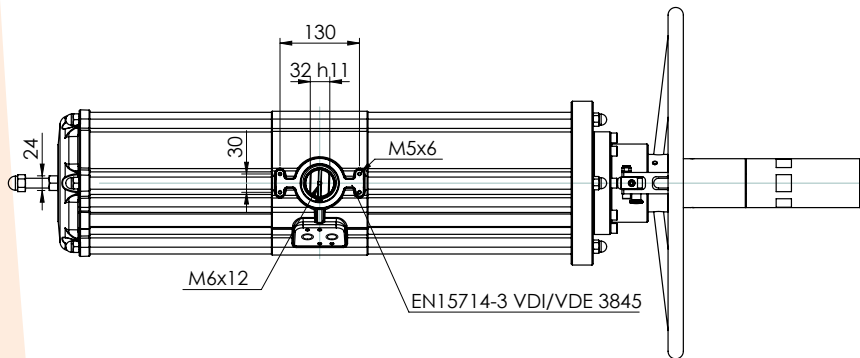
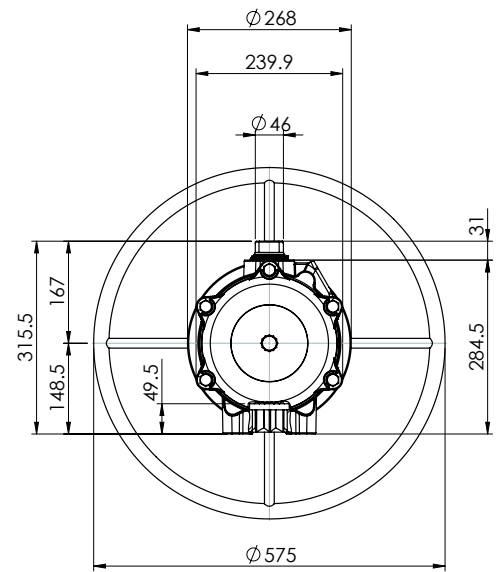
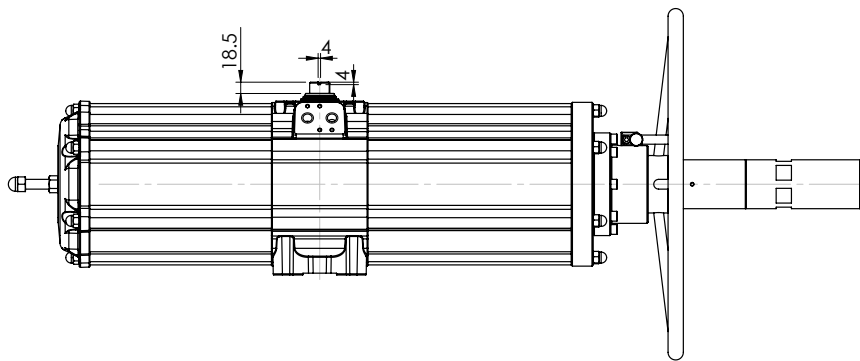
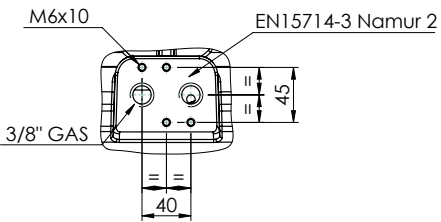
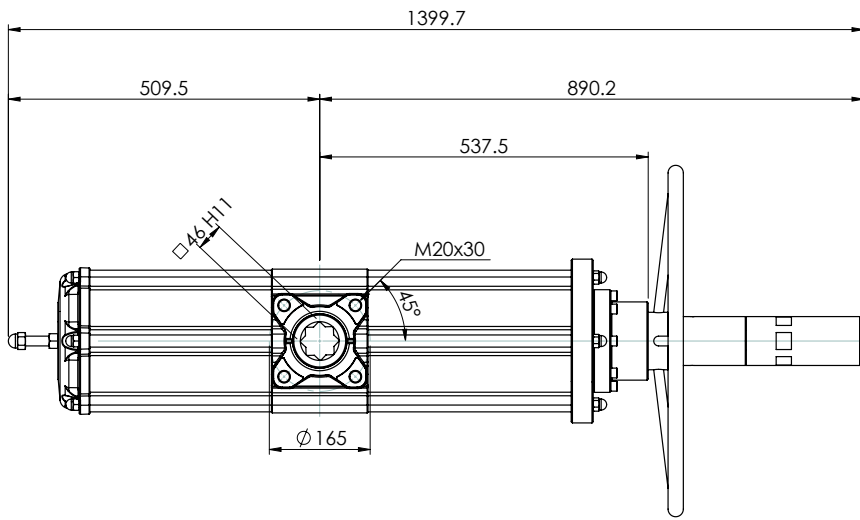
TYPE	GSV30	GSV53	GSV60	GSV90	GSV120	GSV180	GSV240	GSV360	GSV480	GSV720	GSV960			
ISO	F05/F07	F05/F07	F05/F07	F07/F10	F07/F10	F07/F10	F10/F12	F10/F12	F10/F12	F14	F12	F14	F12/F16	F14
A	392,7	431,4	457,7	534,9	558,5	635	700,8	810,1	842,4	842,4	1035,4	1035,4	1067,7	1067,7
B	14	17	17	22	22	22	27	27	36	36	36	36	46	46
C x depth	M6x9	M6x9	M6x9	M8x12	M8x12	M8x12	M10x15	M10x15	M10x15	M16x24	M12x18	M16x24	M12x18	M16x24
D x depth	M8x12	M8x12	M8x12	M10x15	M10x15	M10x15	M12x18	M12x18	M12x18	-	-	-	M20x30	-
E	50	50	50	70	70	70	102	102	102	140	125	140	125	140
F	70	70	70	102	102	102	125	125	125	-	-	-	165	-
G	13	13	13	16	17	19	19	19,5	19,5	19,5	19,5	19,5	18,5	18,5
H	33,7	40,8	42,8	52,5	56,1	58	57,4	61,5	78	78	86,5	86,5	99,2	99,2
J	18	18	18	18	18	18	16	16	16	16	16	16	16	16
K	14	14	14	14	14	14	16	16	16	16	16	16	16	16
I	10	12	12	15	15	19	19	22	24	24	27	27	32	32
L	90,4	103,3	107	137,5	141,1	148	164,9	178	198	198	216	216	237,7	237,7
M	37,7	44,8	46,8	56,5	60,1	62	72,9	78,5	93,5	93,5	101,5	101,5	114,7	114,7
N	52,7	58,5	60,2	81	81	86	92	99,5	104,5	104,5	114,5	114,5	123	123
O	16,5	19,3	19,3	24,8	24,8	24,3	29,5	29,5	38,5	38,5	38,5	38,5	48,5	48,5
P	32,7	38,5	40,2	51	51	56	62	69,5	74,5	74,5	84,5	84,5	93	93
Q	37,7	44,8	46,8	56,5	60,1	62	72,9	78,5	93,5	93,5	101,5	101,5	114,7	114,7
R	14,5	16,2	18	20,2	22,5	25,5	29	31,8	36,5	36,5	41	41	46	46
S	20	20	20	30	30	30	30	30	30	30	30	30	30	30
T	70,4	83,3	87	107,5	111,1	118	134,9	148	168	168	186	186	207,7	207,7
U	129,4	152,1	169,3	196,8	204,8	237	260,2	306,6	324,1	324,1	399	399	414	414
V	180	180	180	220	220	300	300	350	350	350	400	400	400	400
W (Gas)	1/8"	1/8"	1/8"	1/8"	1/8"	1/8"	1/4"	1/4"	1/4"	1/4"	1/4"	1/4"	1/4"	1/4"
X	4	4	4	4	4	4	-	-	-	-	-	-	-	-
Y	137,6	154,8	163,9	183,5	199,1	220,8	236,4	282,3	297,1	297,1	365,6	365,6	382,9	382,9
Z	263,3	279,3	288,4	338,1	353,7	398	440,6	503,5	518,3	518,3	636,4	636,4	653,7	653,7
Ch	13	17	17	22	22	22	27	27	27	27	36	36	36	36

*All dimensions are in mm.

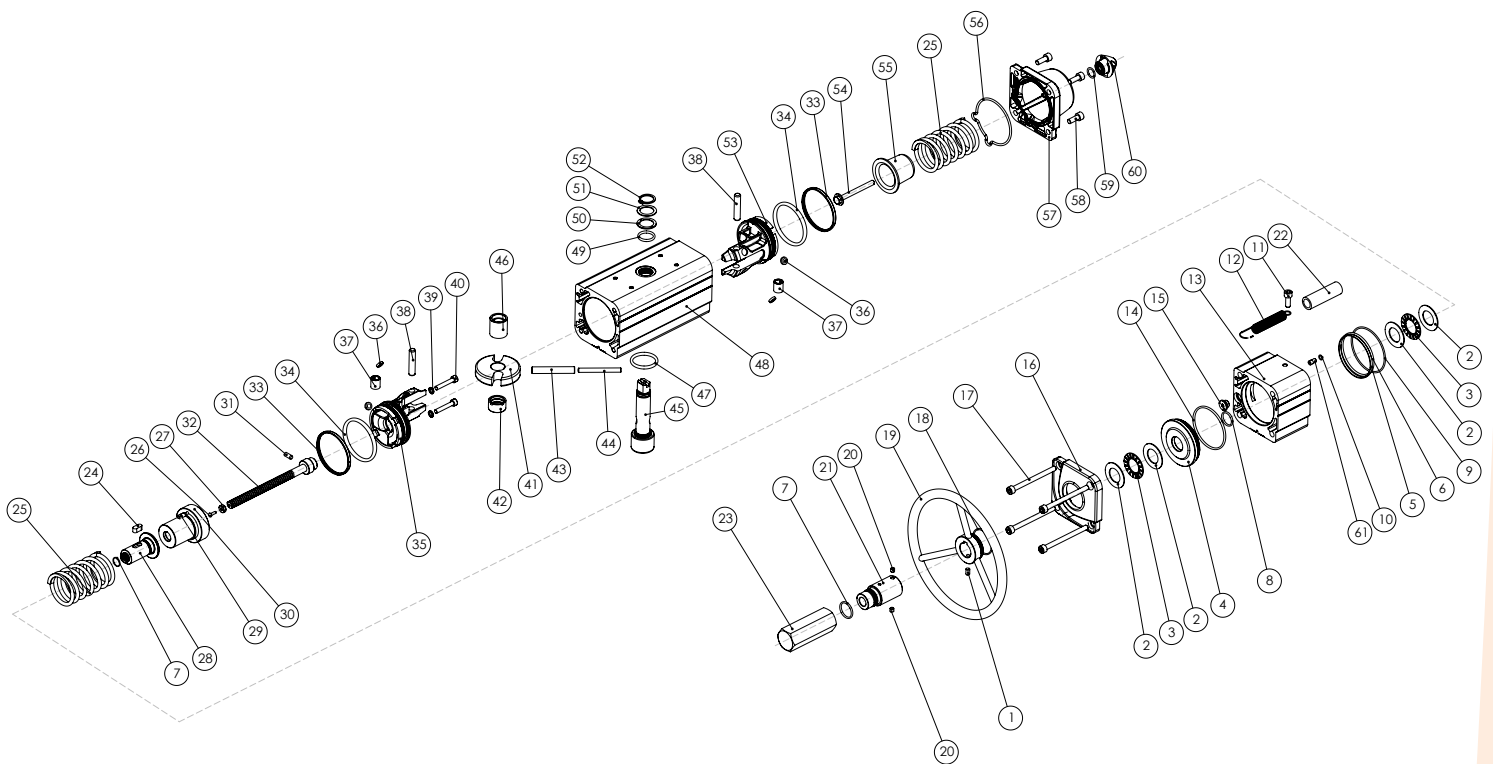
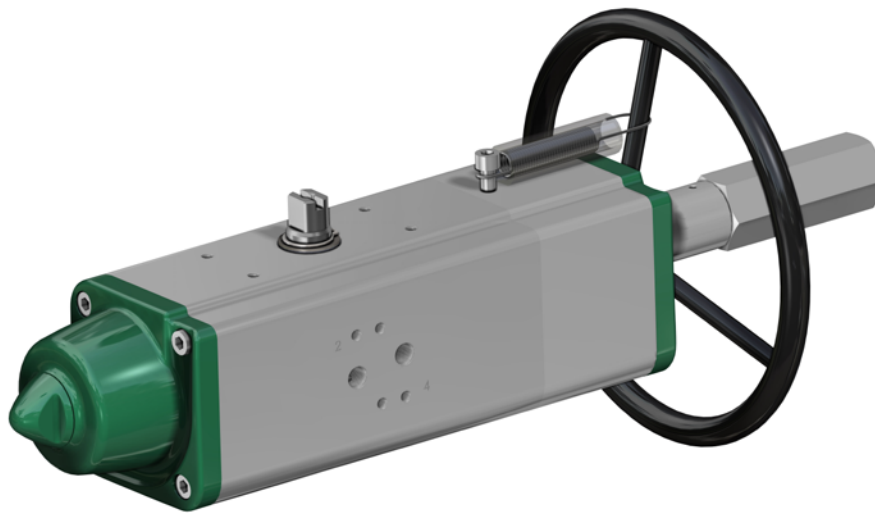
Spring Return Actuators from GSV30 to GSV960



Spring Return Actuators GSV1920



GSV30 ÷ GSV960 Part list

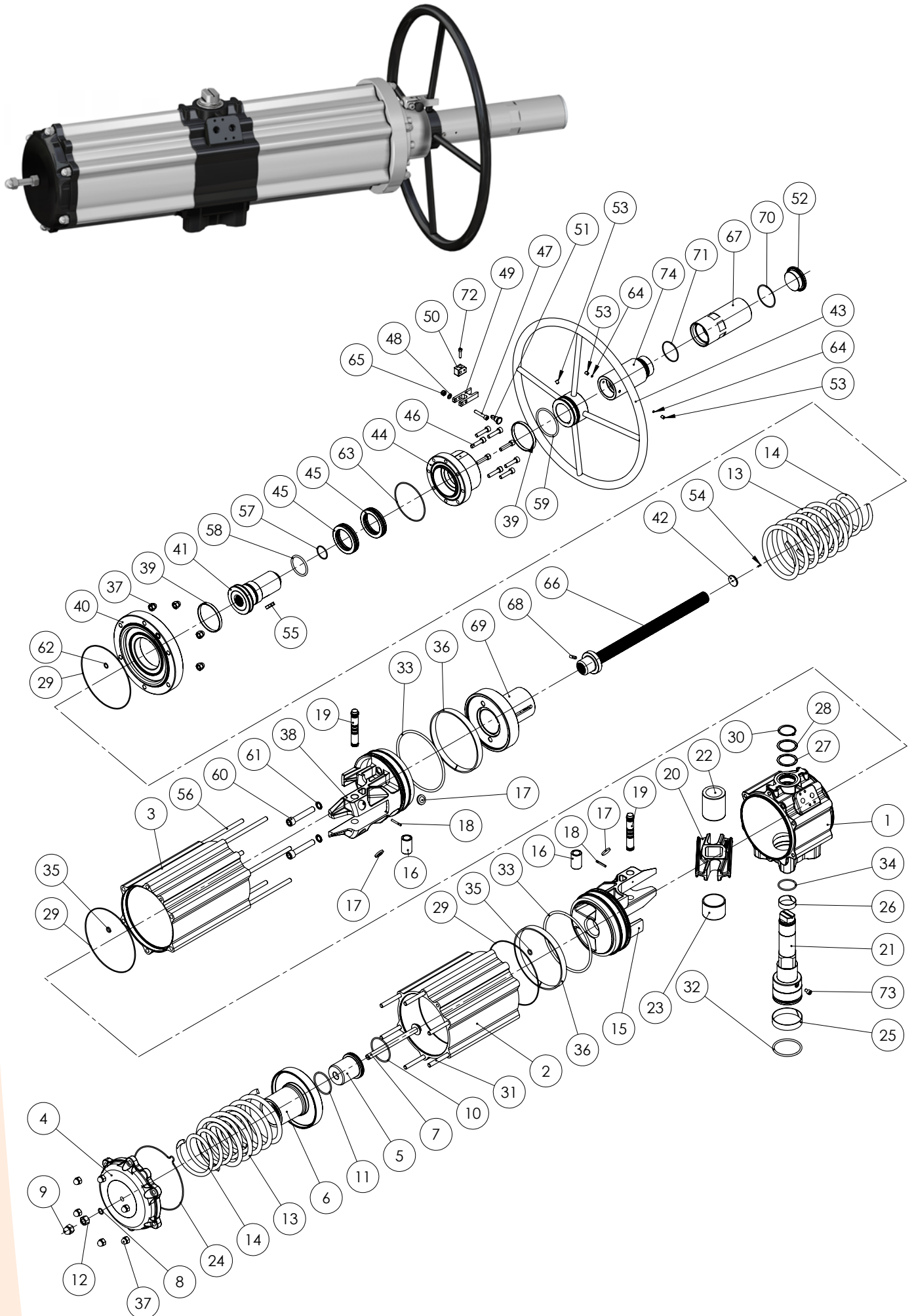


Pos	Denomination	Quantity	Materials
1	Screw	1	Stainless steel
2*	Washer for roller bearing	4	Steel alloy
3*	Roller bearing	2	Steel alloy
4	Flange	1	Aluminium alloy
5	Centering ring [only for GSV 360]	1	Aluminium alloy
6*	O ring [only for GSV 360]	1	Nitrilic rubber
7*	O ring	2	Nitrilic rubber
8*	O ring	1	Nitrilic rubber
9*	O ring	1	Nitrilic rubber
10*	O ring	1	Nitrilic rubber
11	Screw	1	Stainless steel
12	Spring	1	Stainless steel
13	Cylinder spacer	1	Aluminium alloy
14*	O ring	1	Nitrilic rubber
15*	Seal cap	1	Brass + Nitrilic rubber
16	Cap [Modified]	1	Aluminium alloy
17	Screw	4	Stainless steel
18*	O ring [for seal]	1	Nitrilic rubber
19	Handwheel for maneuver	1	Steel alloy
20	Set screw	2	Stainless steel
21	Protecting tube	1	Aluminium alloy
22	Transparent tube	1	Polycarbonate
23	Protecting cap	1	Aluminium alloy
24	Key	1	Steel alloy
25	Spring	2	Steel alloy
26*	Rivet	1	Steel alloy
27*	Indicator	1	Polypropylene
28	Lead nut maneuver	1	Steel alloy
29	Threaded bush [only for GSV 240]	2	Stainless steel
30	Special spring cap	1	Aluminium alloy
31	Pin	1	Steel alloy

Pos	Denomination	Quantity	Materials
32	Screw maneuver	1	Steel alloy
33*	Dynamic seal (piston)	2	Polyurethane
34*	O ring	2	Nitrilic rubber
35	Piston (modified)	1	Aluminium alloy
36*	Piston's support	4	P.T.F.E. Carbo-Graphite filled
37	Bush	2	Steel alloy
38	Rotative sleeve	2	Steel alloy
39*	Bounded	2	Stainless steel + Nitrilic rubber
40	Screw	2	Stainless steel
41	Scotch yoke	1	Steel alloy
42	Shaft support	1	Acetalic resin
43	External elastic pin of the yoke	1	Steel alloy
44	Internal elastic pin of the yoke	1	Steel alloy
45	Shaft	1	Stainless steel
46	Support bush	1	Acetalic resin
47	O ring (lower sealing shaft)	1	Fkm
48	Cylinder	1	Aluminium alloy
49	O ring (upper sealing shaft)	1	Fkm
50	External support ring	1	Acetalic resin
51	Washer	1	Stainless steel
52	Seeger	1	Stainless steel
53	Piston (standard)	1	Aluminium alloy
54	Spring loading screw	1	Stainless steel
55	Spring cap (standard)	1	Steel alloy or Aluminium alloy
56*	Cap O ring	1	Nitrilic rubber
57	Cap (standard)	1	Aluminium alloy
58	Screw	4	Stainless steel
59*	O ring	1	Nitrilic rubber
60	Nut	1	Aluminium alloy
61	Insert for O ring (for GSV 53-120-180-360)	1	Stainless steel

* Components of spare part kit

GSV1920 Part list



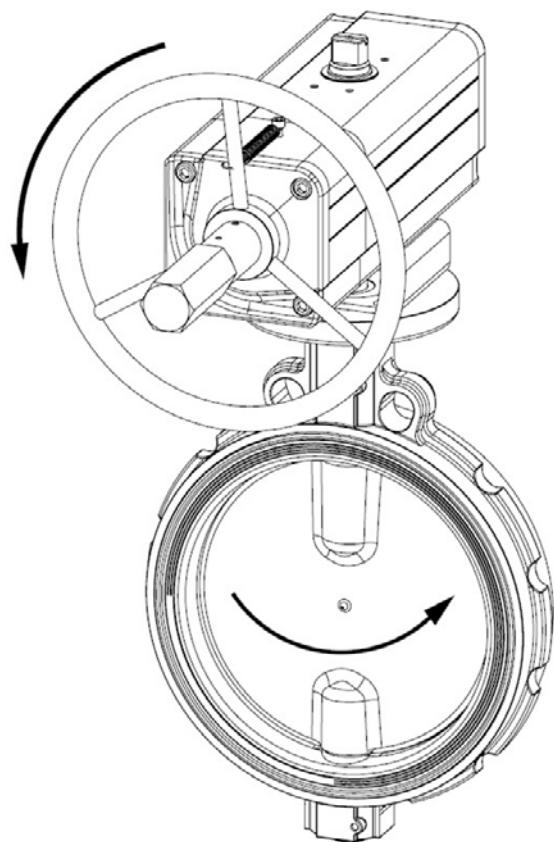
Pos	Denomination	Quantity	Materials
1	Cylinder	1	Aluminium alloy
2	Cylinder	1	Aluminium alloy
3	Cylinder	1	Aluminium alloy
4	Cap GSV	1	Aluminium alloy
5	Internal spring supp.	1	Aluminium alloy
6	External spring supp.	1	Aluminium alloy
7	Spring loading screw	1	Stainless steel
8*	O ring	1	Nitrilic Rubber
9	Cap nut	1	Stainless steel
10	O ring	1	Nitrilic Rubber
11	O ring	1	Nitrilic Rubber
12	Nut	1	Stainless steel
13	External spring	2	Steel alloy
14	Internal spring	2	Steel alloy
15	Piston	1	Aluminium alloy
16	Bush	2	Steel alloy
17*	Piston's support	4	Acetalic resin
18	Spring pin	2	Steel alloy
19	Rotative sleeve	2	Steel alloy
20	Scotch yoke	1	Steel alloy
21	Shaft	1	Stainless steel
22	Support busch	1	Acetalic resin
23	Shaft support	1	Acetalic resin
24*	Cap O ring	1	Nitrilic Rubber
25*	Bearing (shaft button)	1	Acetalic resin
26*	Bearing (shaft top)	1	Acetalic resin
27*	External support ring	1	Acetalic resin
28	Washer	1	Stainless steel
29*	Cylinder O ring	3	Nitrilic Rubber
30	Seeger	1	Stainless steel
31	Cap screw	6	Stainless steel
32*	O ring (low sealing shaft)	1	FKM
33*	Piston O ring	2	Nitrilic Rubber
34*	O ring (upper sealing shaft)	1	FKM
35*	O ring	2	Nitrilic Rubber
36*	Dynamic seal (piston)	2	P.T.F.E. Carbo-Graphite filled
37	Cap nut	12	Stainless steel
38	Piston (modified)	1	Aluminium alloy
39*	Bearing (handwheel)	2	Polyuretane
40	Special cap	1	Aluminium alloy
41	Lead nut maneuver	1	Steel alloy
42*	Indicator	1	Polypropylene
43	Handwheel for maneuver	1	Steel alloy
44	Flange	1	Aluminium alloy
45*	Thrust bearing	2	Steel alloy
46	Screw	8	Stainless steel
47	Screw	1	Stainless steel
48	Washer	1	Stainless steel
49	Closing fork	1	Aluminium alloy
50	Fprk support	1	Aluminium alloy
51	Lock wheel	1	Stainless steel
52	Protecting cap	1	Aluminium alloy
53	Screw	3	Stainless steel
54*	Rivet	1	Stainless steel
55	Key	1	Steel alloy
56	Cap screw	6	Steel alloy
57*	O ring	1	Nitrilic Rubber
58*	O ring	1	Nitrilic Rubber
59*	O ring	1	Nitrilic Rubber
60	Screw	2	Stainless steel
61*	Bounded	2	Stainless steel NBR
62*	O ring	1	Nitrilic Rubber
63*	O ring	1	Nitrilic Rubber
64*	Plug	2	PTFE
65	Nut	1	Stainless steel
66	Screw maneuver	1	Stainless steel
67	Protecting removable tube	1	Aluminium alloy
68	Pin	1	Stainless steel
69	Special springs cap	1	Steel alloy
70*	O ring	1	Nitrilic Rubber
71*	O ring	1	Nitrilic Rubber
72	Screw	1	Stainless steel
73	Safety screw	1	Stainless steel
74	Protecting tube	1	Aluminium alloy

* Components of spare part kit

Functional Description

ATTENTION:

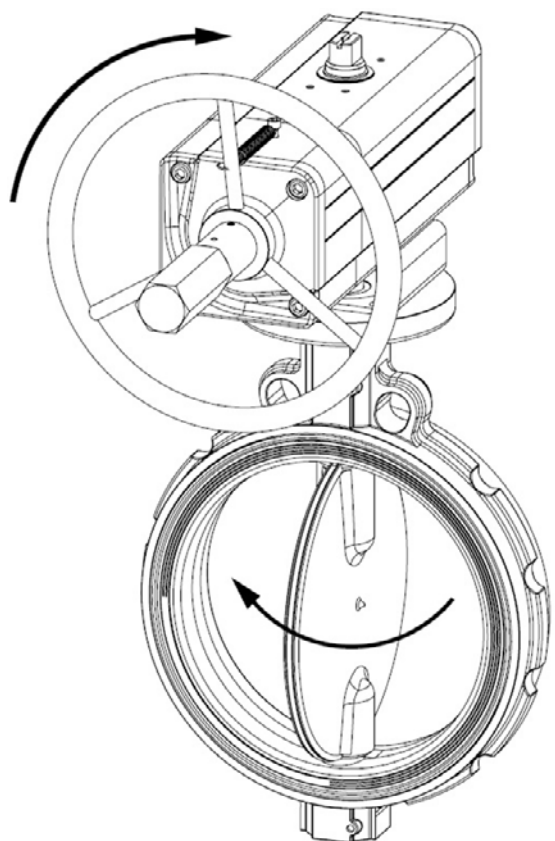
Prior to operate manually, ensure that the actuator is free from pressure.



TO OPEN THE VALVE

To open the valve turn the wheel in counter clockwise direction.

(for standard actuator)

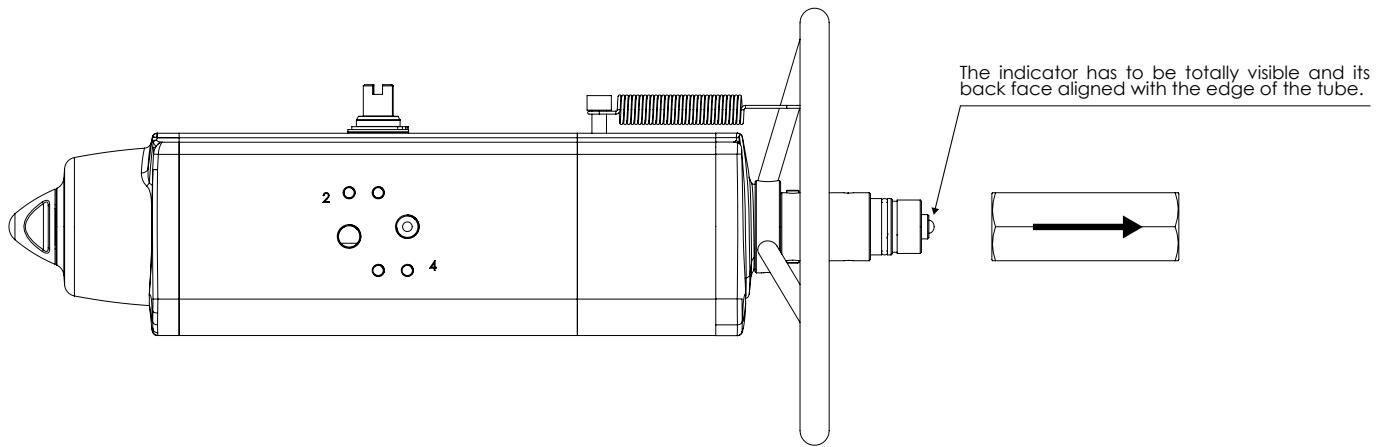


TO CLOSE THE VALVE

To close the valve turn the wheel in clockwise direction.

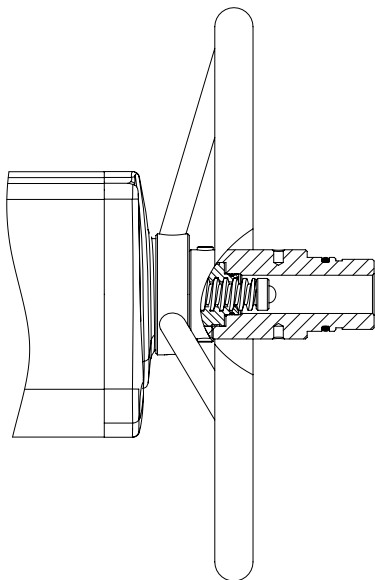
(for standard actuator)

When the actuator has been operated manually, return to the neutral position prior to normal operation.



NEUTRAL POSITION

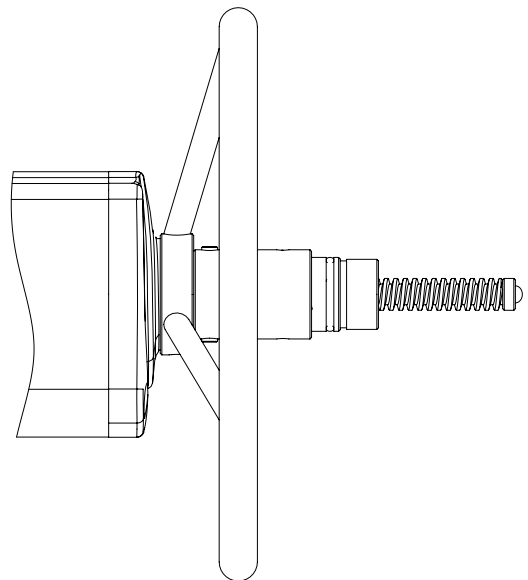
With the screw in neutral position the piston can move freely and the actuator can be driven pneumatically.



MANUAL OPERATION

GDV: When the hand wheel is turned counter clockwise, the screw and pistons are pushed inwards. The valve opens.

GSV: When the hand wheel is turned clockwise, the screw and pistons are pushed inwards. The valve closes.



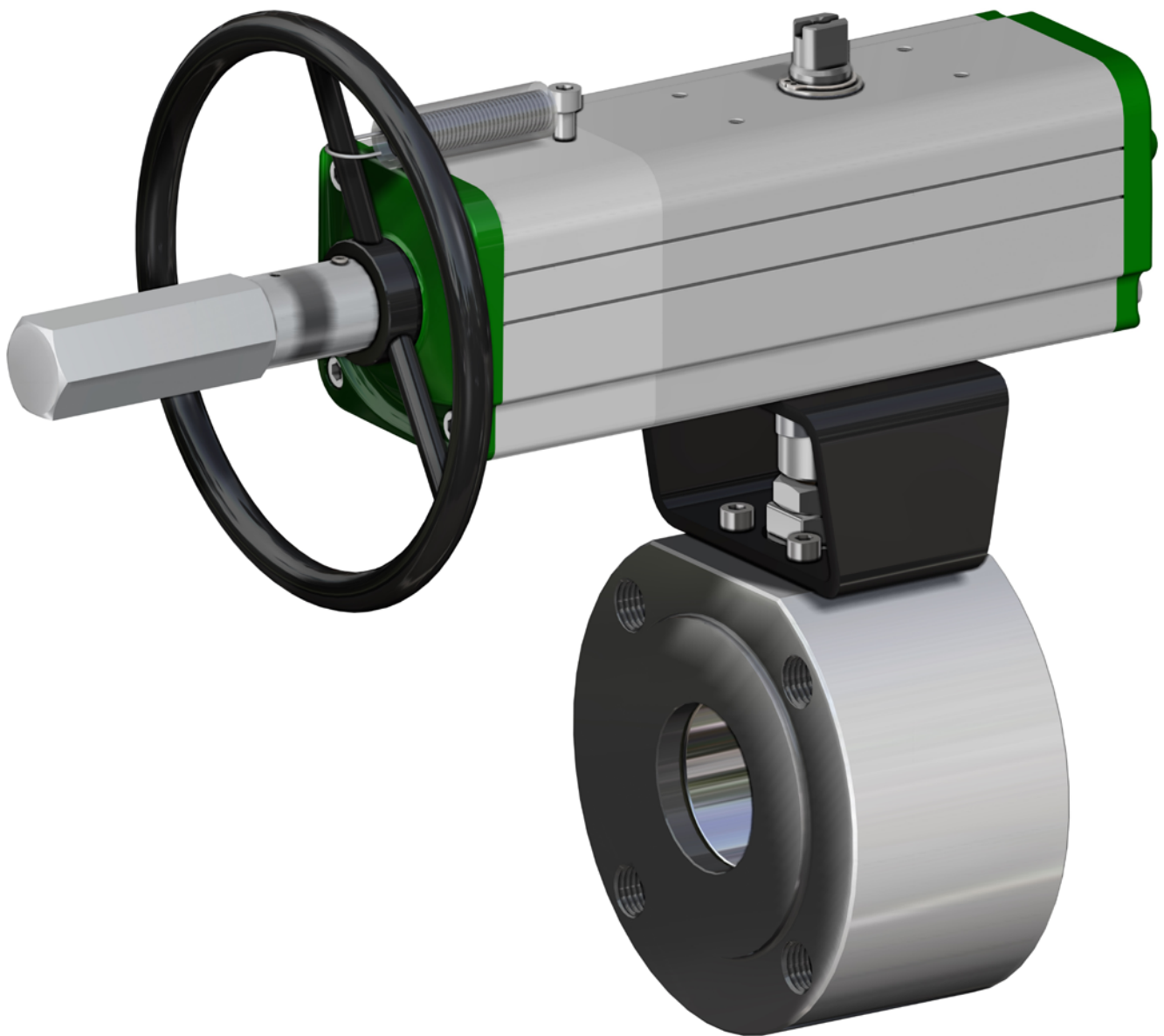
MANUAL OPERATION

GDV: When the hand wheel is turned clockwise, the screw and pistons are drawn outwards. The valve closes.

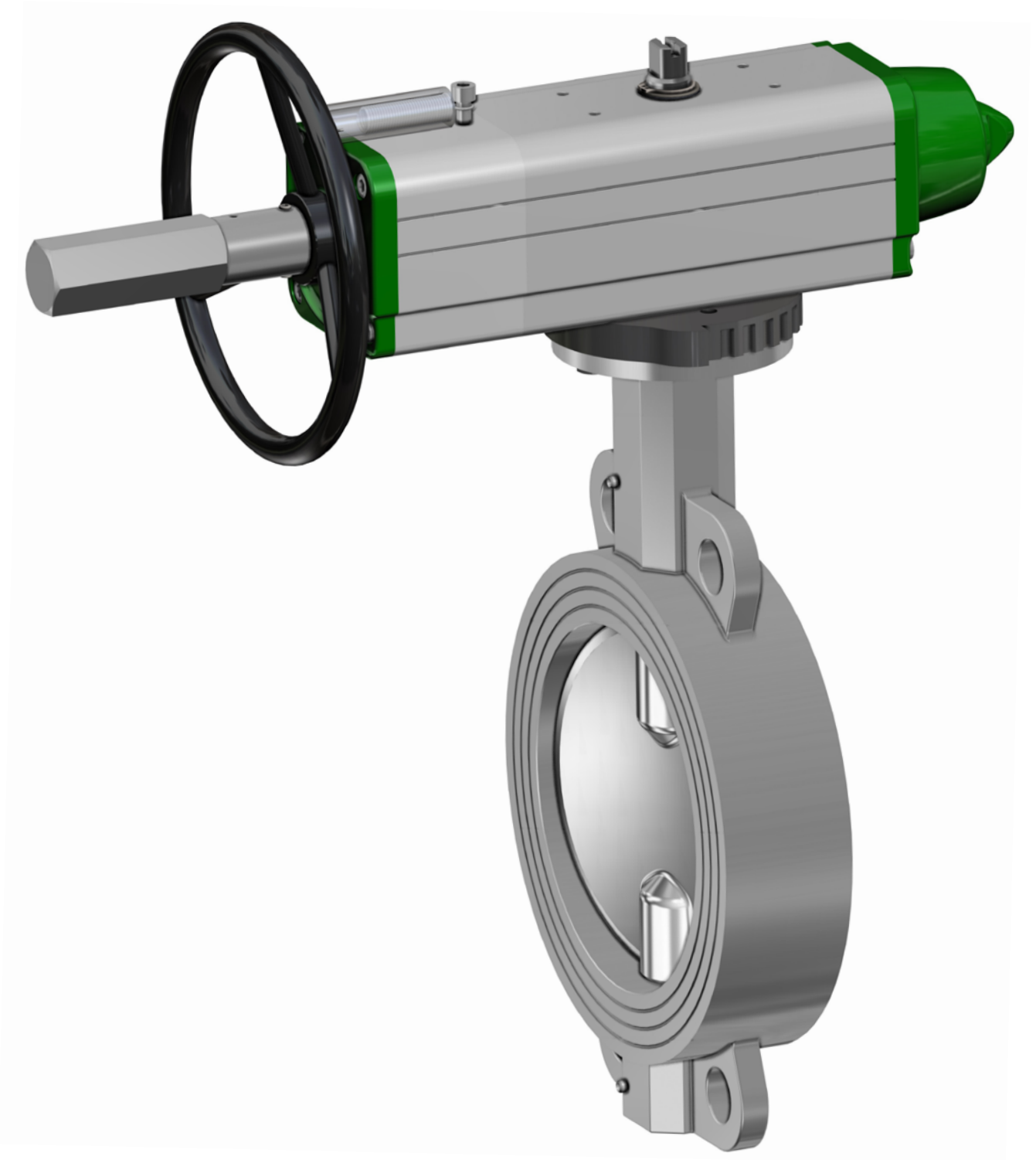
GSV: When the hand wheel is turned counter clockwise, the screw and the pistons are drawn outwards. The valve opens.

Application

GDV with stainless steel ball valve



GSV with stainless steel butterfly valve





ACTUATECH S.p.A.

Via San Lorenzo 70 - 25069 – Villa Carcina (BS) - Italy

Ph: +39 030.89.08.142 - Fax: +39 030.89.08.143

mail: actuatech@actuatech.com

www.actuatech.com